

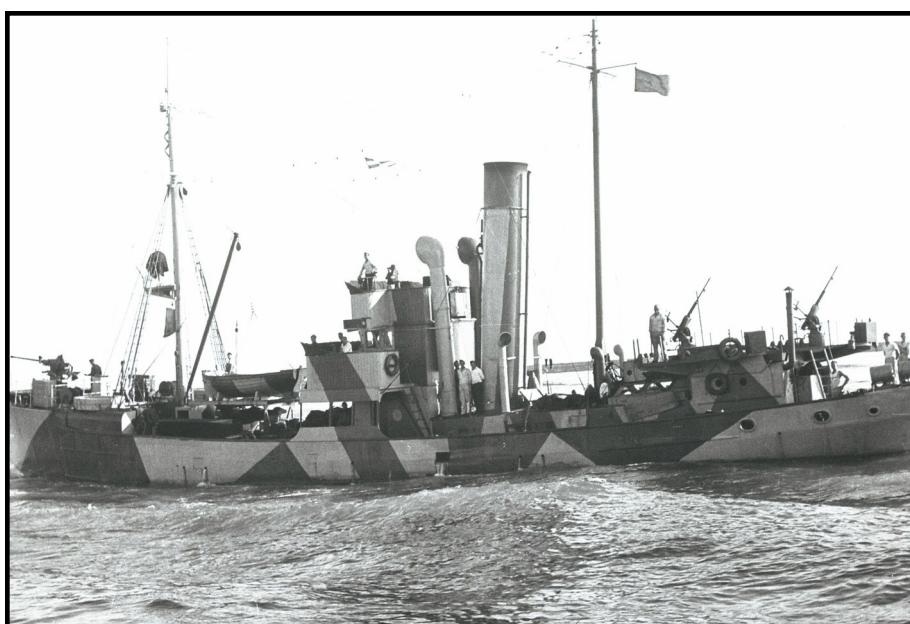
1944

The German armed trawler *Maria Van Hatten* (M4600)

Commanded by Lieutenant P. Hubner, the M4600 had been based in St. Malo since March 1944 as part of the 46th Flotilla under Lieutenant-commander Zimmermann.

The Flotilla was composed of a variety of fishing vessels, employed as escorts and for local defence. They were lightly armed with 37mm cannon and single or twin 20mm's. The unit was dissolved in September 1944, following the Allied invasion of France, and the 7 surviving vessels transferred to the Channel Islands.

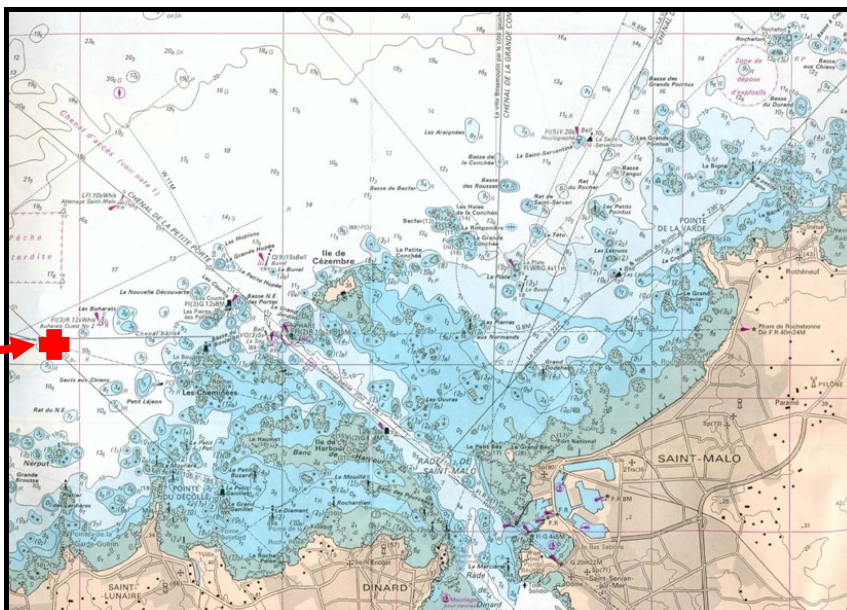
The M4600 was lost on the 29th March 1944, after triggering a magnetic mine off of St. Lunaire, whilst on an escort mission. The M4601 and M4606 attempted to take her in tow, but abandoned her after the cable parted – all her crew survived the incident !



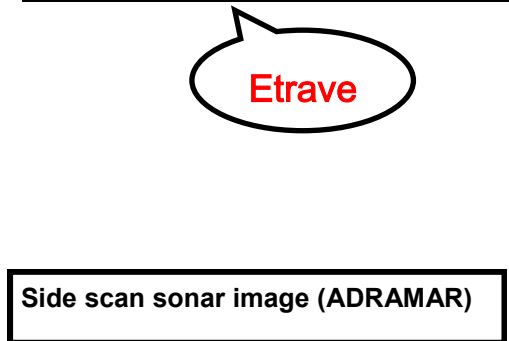
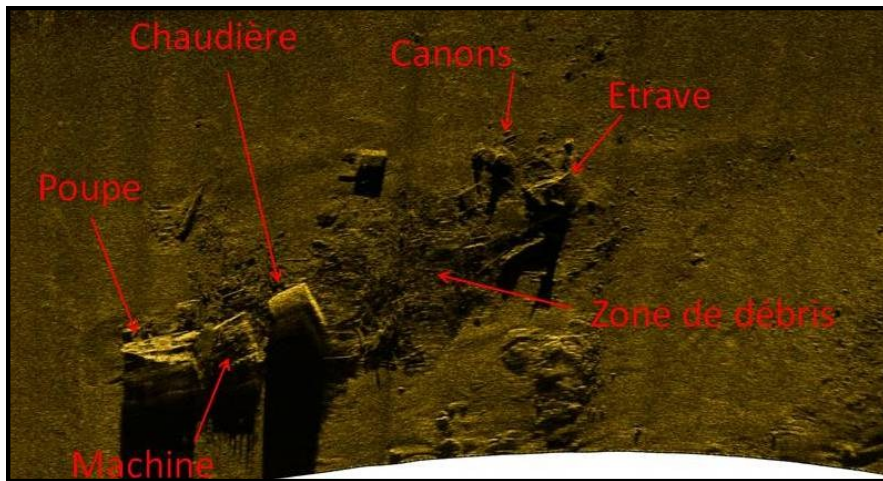
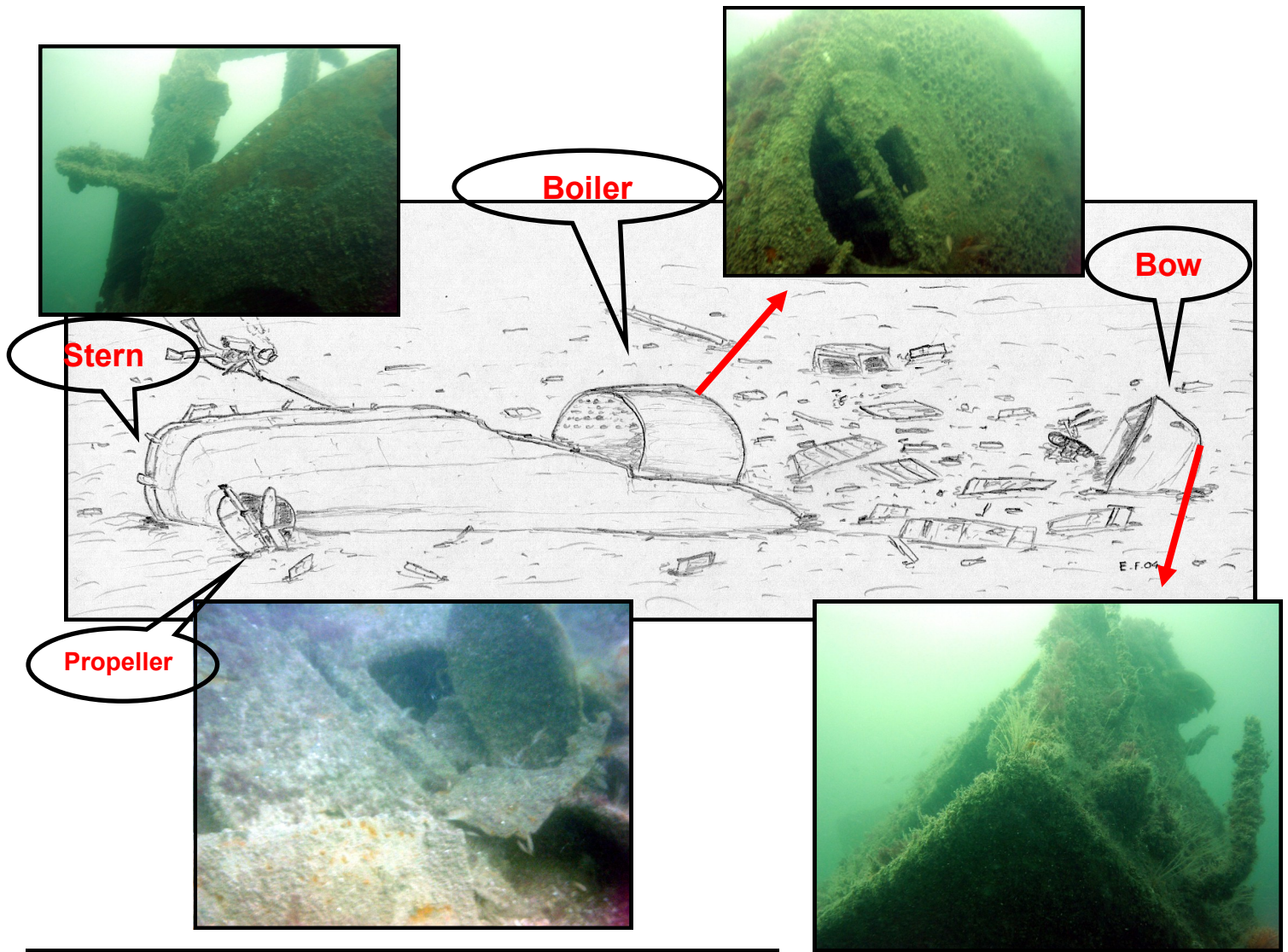
32.62m . . . M4600 (formerly Maria Van Hatten) built 1924 by Smith's Dock Co. and based in IJmuiden before the war. 32.62 x 7.32 metres, speed 10 knots.

An armed trawler similar to the M4600

**Wreck site off of St-Lunaire
48°40. 188N 02°08. 142W (Eur 50)**



SAINT MALO PLONGÉE EMERAUDE



Side scan sonar image (ADRAMAR)

The wreck

A relatively small wreck, the bow lies on its starboard side, a twin barrelled cannon close by. The well preserved boiler provides a home for numerous conger eels and the stern section, also on its starboard side, can be entered safely. The propeller is to be found half buried in the sand and there is a small debris field to the North. Lying East/West at a depth of 18 to 28 metres, depending on the state of tide; the M4600 still hides some munitions despite several clearance operations and because of which, diving on her was forbidden between 1988 and 2012. The wreck is a haven for many species of fish, which can be enjoyed thanks to the good visibility - particularly at high water.

SAINTE MARIE PLONGÉE EMERAUDE

Emmanuel Feige, 2012